

# Parkheath

*Sold on Service*

---

**Haverstock Hill NW3**

**£2,492 PCM (£575 per week) - Camden Band F**



Spacious 2 bedroom apartment

Large balcony

Wood floor reception

2 double bedrooms

Close to underground stations

Smart purpose built block with lift

Secure underground parking space

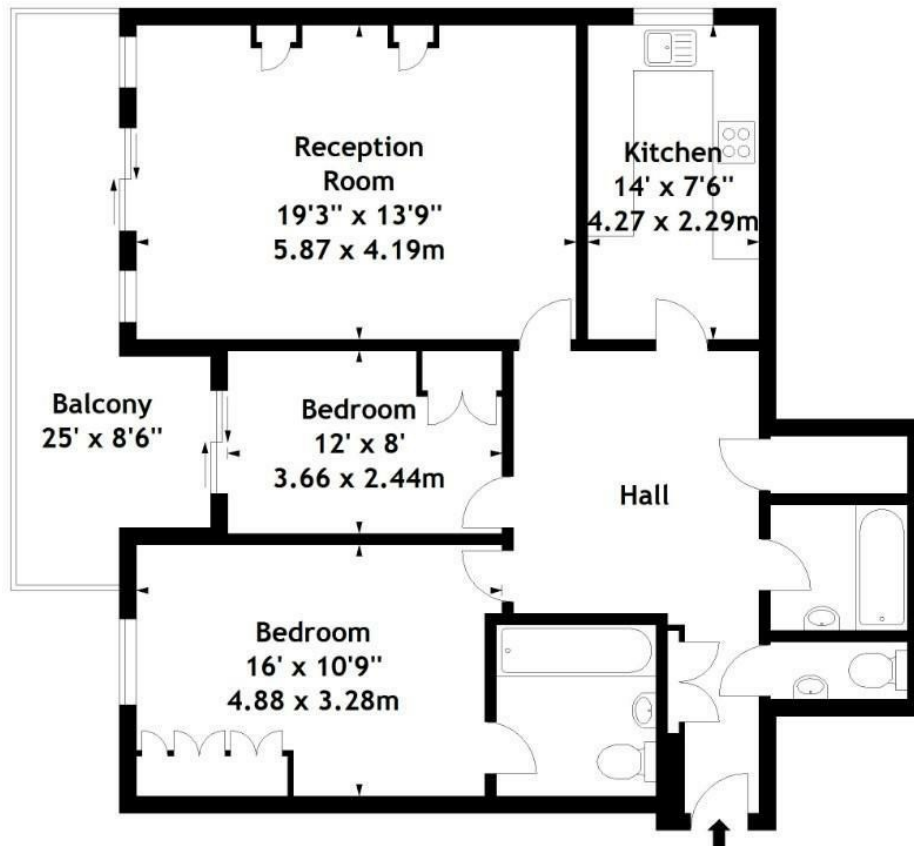
Good size kitchen with all appliances

2 bathrooms

Short walk to underground stations

Belsize Park Office 020 7431 3104

Walham Court,  
Haverstock Hill, NW3  
Approx. Gross Internal Area  
961 Sq Ft - 89.28 Sq M



**Fourth Floor**

Measured in accordance with RICS guidelines. Every attempt is made to ensure accuracy, however all measurements are approximate. This floor plan is for illustrative purposes only and is not to scale.  
© Datagraphy Ltd 2014  
Photographs \* Floorplans \* Virtual Tours  
Tel: 0845 643 4401 [www.datagraphy.com](http://www.datagraphy.com)

The particulars do not constitute part of an offer or contract. The particulars, including text, photographs and plans, are for the guidance only of prospective purchasers/tenants and must not be relied upon as statements of fact. The descriptions provided therein represent the opinion of the author and whilst given in good faith should not be construed as statements of fact. Nothing in these particulars shall be deemed a statement that the property is in good condition or otherwise or that any services or facilities are in good working order. All measurements are approximate